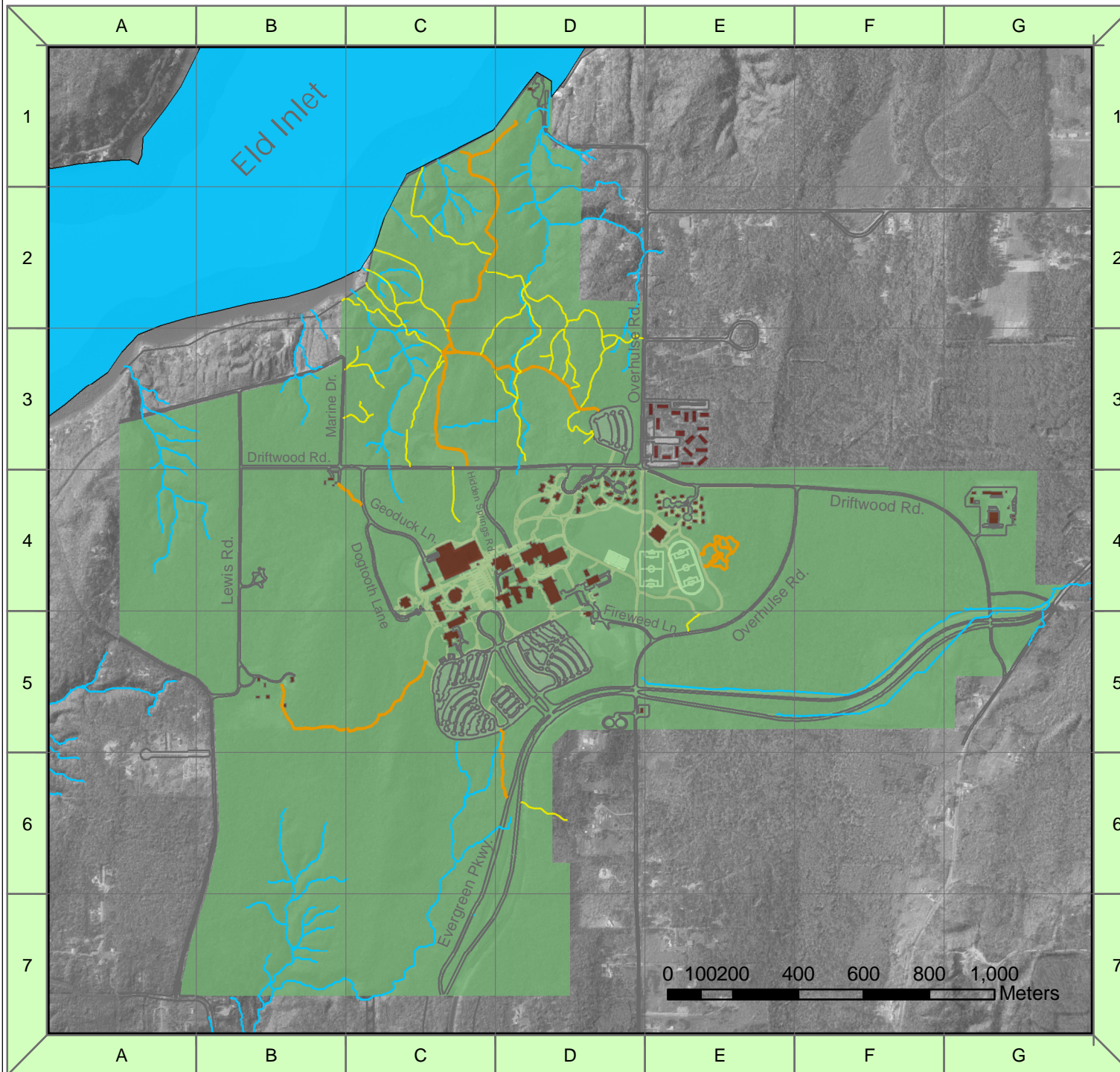


The Evergreen State College Campus Trails Map



Places Of Interest

Organic Farm Trail	B5,C5
Beach Trails	C1,C2,C3,D3
Challenge Course Trails	E4
Parking Lot B	C5
Parking Lot C	D5
Parking Lot F	D3
Campus Housing	D4,E4
Cooper's Glen	E3

Legend

- Improved Trails
- Unimproved Trails
- Streams
- Walkways
- Roads
- Buildings
- TESC Campus

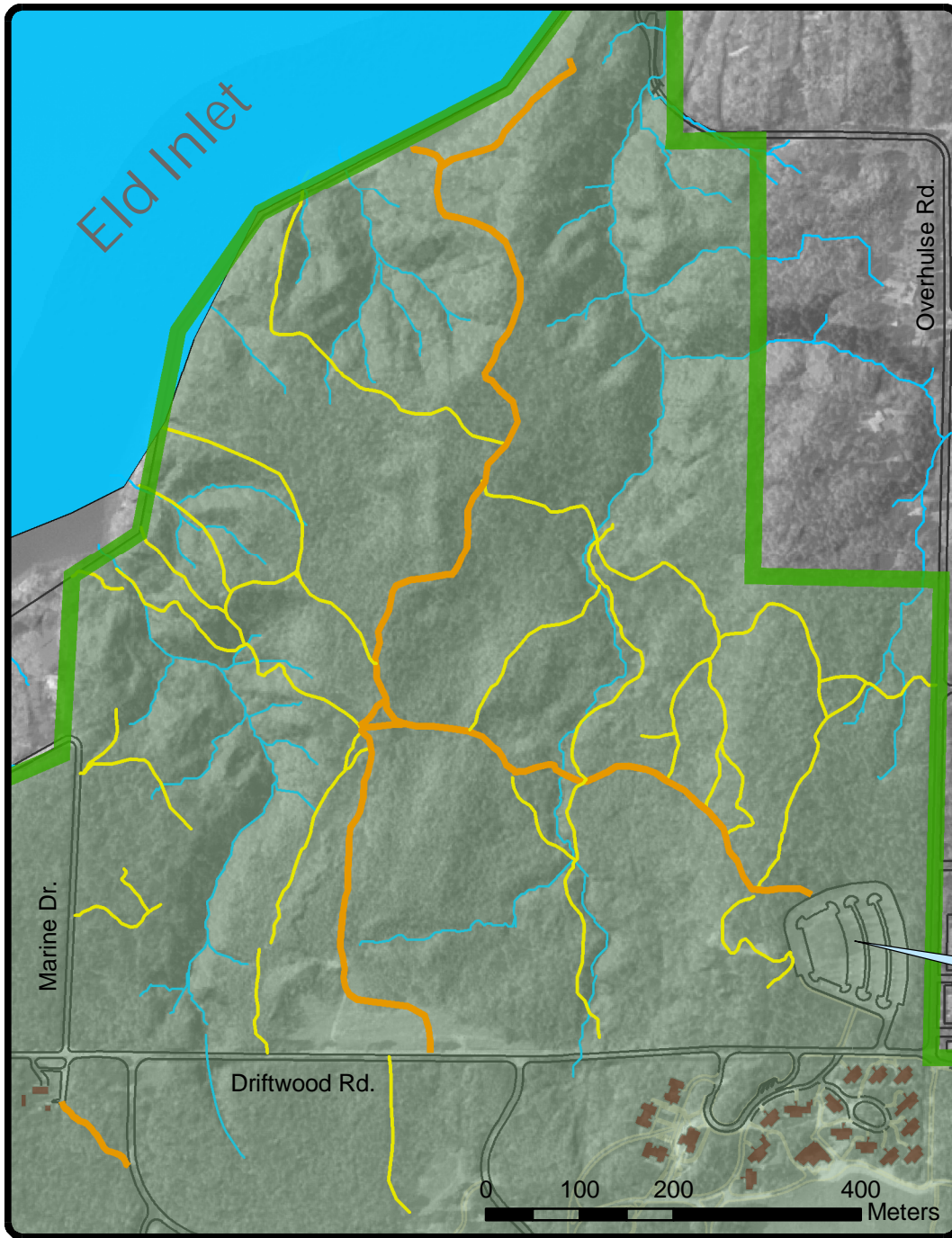
Please use Evergreen's trails responsibly and respectfully.

- Pack out what you pack in; Leave no trace
- Dogs must be kept on a leash at all times
- Bikes are not allowed on the trails
- Camping is prohibited

Map prepared by Sean Patrick for GIS Spring 2006



UTM Zone 10, NAD83



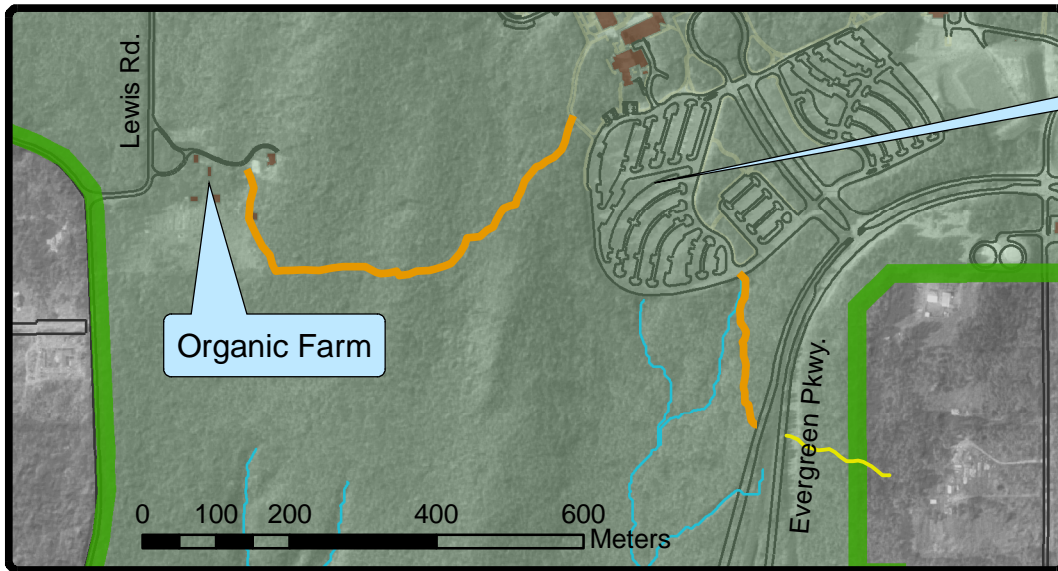
Detail 1 - Beach Trails

Length: Approx. 1.5 km
 Access: Accessible from Driftwood Rd. or from Parking Lot F

Legend

- Improved Trails
- Unimproved Trails
- Streams
- Walkways
- Roads
- Buildings
- TESC Campus

Parking Lot F



Parking Lot B

Detail 2 - Organic Farm Trail

Length: 0.7 km
 Access: Trailhead located near Parking Lot B