



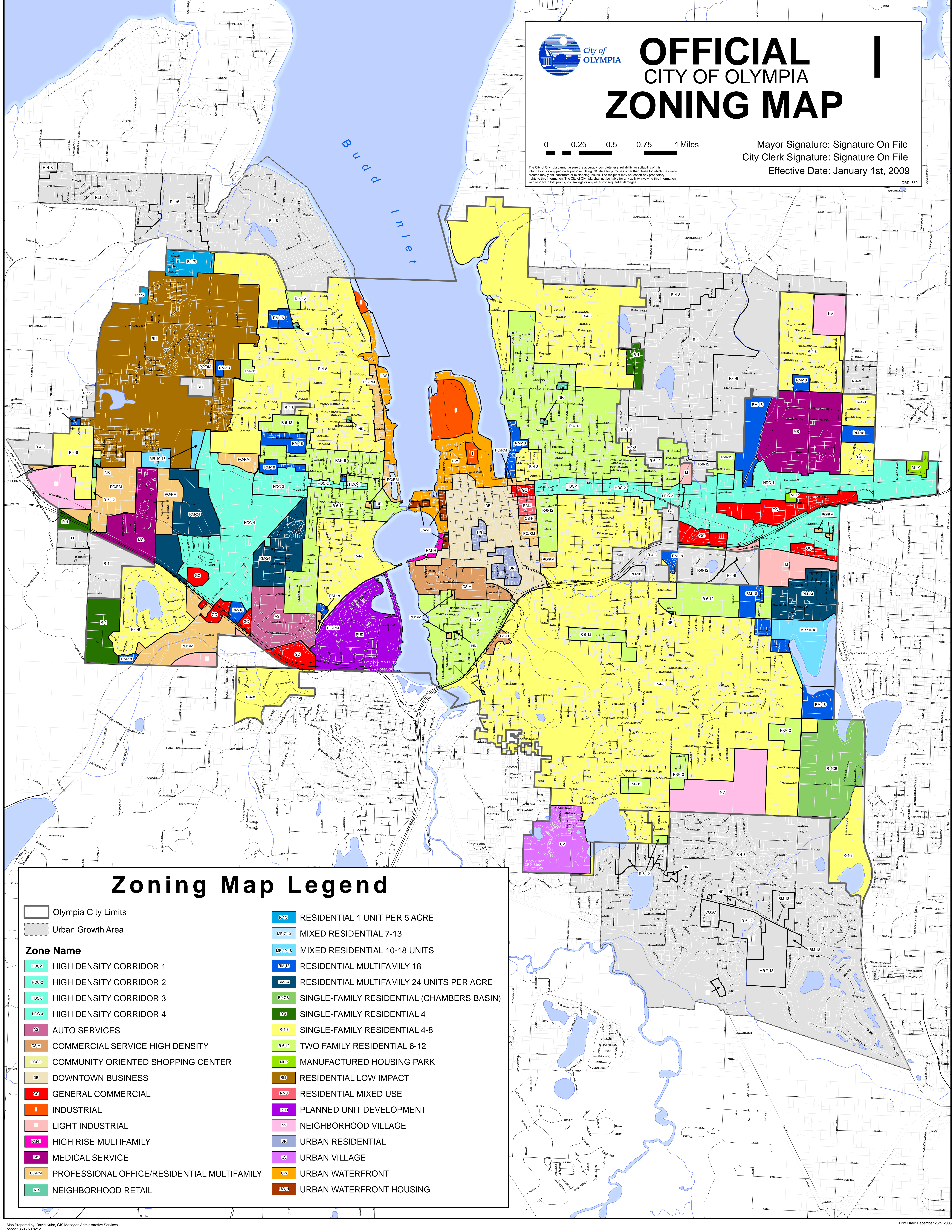
OFFICIAL CITY OF OLYMPIA ZONING MAP

0 0.25 0.5 0.75 1 Miles

Mayor Signature: Signature On File
City Clerk Signature: Signature On File
Effective Date: January 1st, 2009

The City of Olympia cannot assure the accuracy, completeness, reliability, or suitability of this information for any particular purpose. Using GIS data for purposes other than those for which they were created may yield inaccurate or misleading results. The recipient may not assert any proprietary rights to this information. The City of Olympia shall not be liable for any activity involving this information with respect to lost profits, lost savings or any other consequential damages.

ORD: 6594



Zoning Map Legend

- Olympia City Limits
- Urban Growth Area

Zone Name

- HDC-1 HIGH DENSITY CORRIDOR 1
- HDC-2 HIGH DENSITY CORRIDOR 2
- HDC-3 HIGH DENSITY CORRIDOR 3
- HDC-4 HIGH DENSITY CORRIDOR 4
- AS AUTO SERVICES
- CSH COMMERCIAL SERVICE HIGH DENSITY
- COSC COMMUNITY ORIENTED SHOPPING CENTER
- DB DOWNTOWN BUSINESS
- GC GENERAL COMMERCIAL
- I INDUSTRIAL
- LI LIGHT INDUSTRIAL
- RMH HIGH RISE MULTIFAMILY
- MS MEDICAL SERVICE
- POORM PROFESSIONAL OFFICE/RESIDENTIAL MULTIFAMILY
- NR NEIGHBORHOOD RETAIL
- R-15 RESIDENTIAL 1 UNIT PER 5 ACRE
- MR-7-13 MIXED RESIDENTIAL 7-13
- MR-10-18 MIXED RESIDENTIAL 10-18 UNITS
- RM-18 RESIDENTIAL MULTIFAMILY 18
- RM-24 RESIDENTIAL MULTIFAMILY 24 UNITS PER ACRE
- R-4CB SINGLE-FAMILY RESIDENTIAL (CHAMBERS BASIN)
- R-4 SINGLE-FAMILY RESIDENTIAL 4
- R-4-8 SINGLE-FAMILY RESIDENTIAL 4-8
- R-6-12 TWO FAMILY RESIDENTIAL 6-12
- MHP MANUFACTURED HOUSING PARK
- RU RESIDENTIAL LOW IMPACT
- RMU RESIDENTIAL MIXED USE
- PUD PLANNED UNIT DEVELOPMENT
- NV NEIGHBORHOOD VILLAGE
- UR URBAN RESIDENTIAL
- UV URBAN VILLAGE
- UW URBAN WATERFRONT
- UWH URBAN WATERFRONT HOUSING