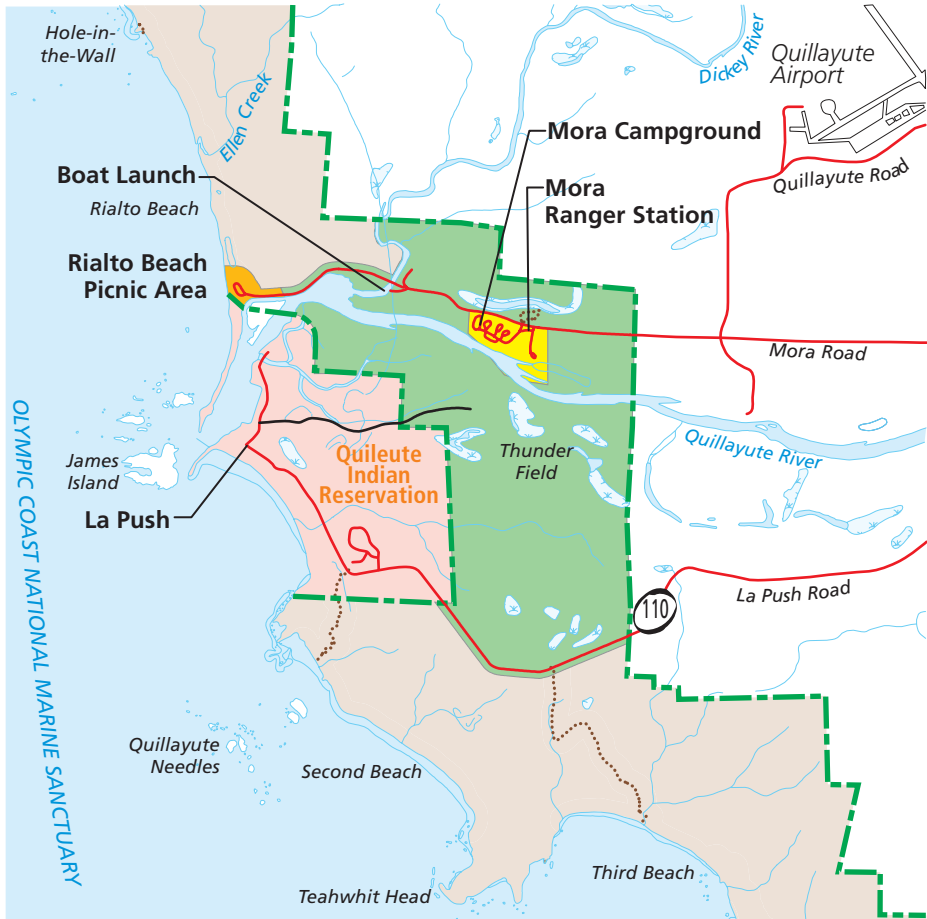


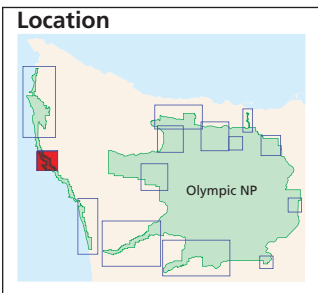
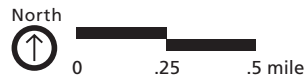
Mora Alternative A - Current Management



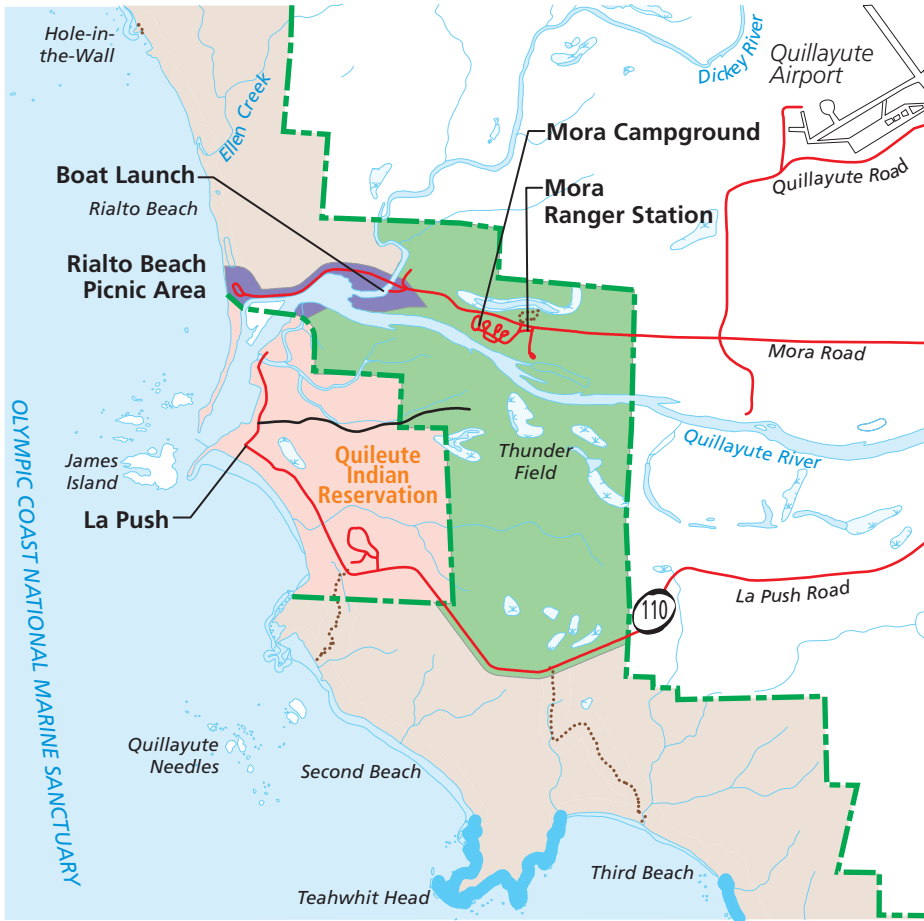
1. The roads, access, and parking would be retained. The existing frontcountry trails would be retained.
2. Mora campground and ranger station would remain. Rialto Beach facilities would be retained.
3. There would be no boat service from Mora to La Push.

Legend

 Low Use Zone	 NPS Boundary
 Day Use Zone	 Trail
 Development Zone	 Paved road
 NPS Wilderness	 Unpaved road
	 Indian Reservation
	 USFS



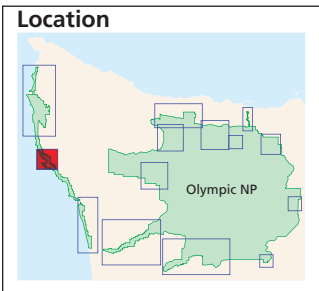
Mora Alternative B - Resource Protection Emphasis



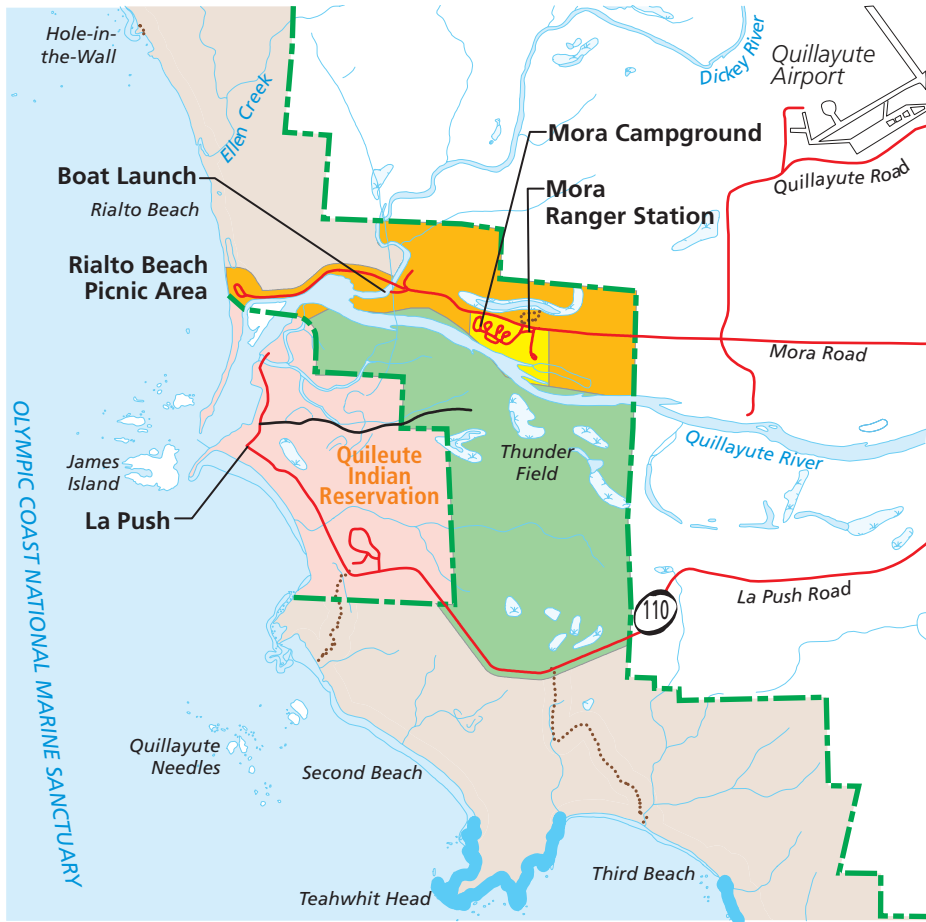
1. Roads, access, and parking would be retained unless threatened by river movement; then they would be relocated outside the river meander area, if possible. The existing frontcountry trails would be retained.
2. Mora campground and ranger station would remain. Rialto Beach facilities would be relocated to improve resource conditions.
3. There would be no boat service from Mora to La Push.

Legend

 Low Use Zone	 NPS Boundary
 River Zone	 Trail
 NPS Wilderness	 Paved road
 Intertidal Reserve Zone	 Unpaved road
	 Indian Reservation
	 USFS



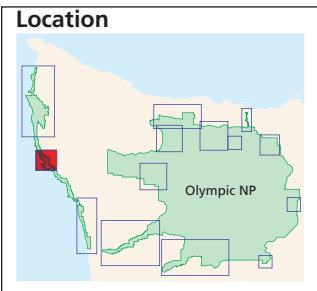
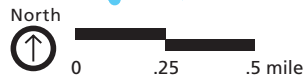
Mora Alternative C - Visitor Opportunities Emphasis



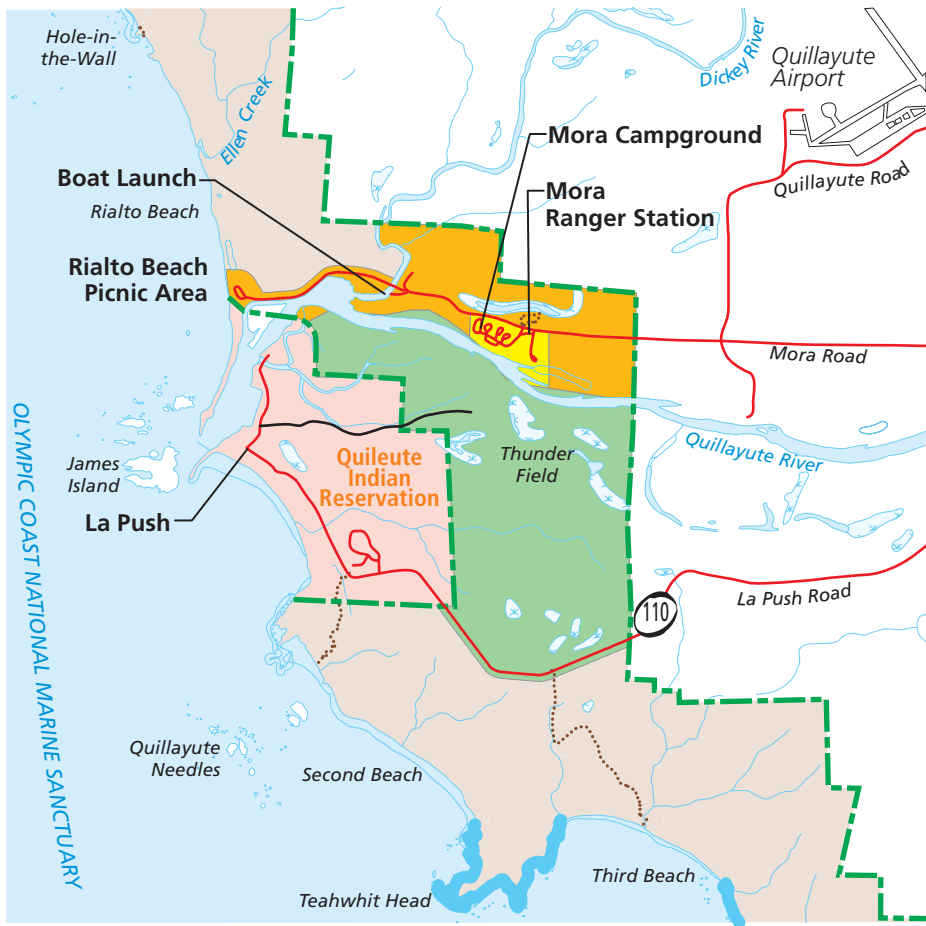
1. Roads, access, and parking would be improved and/or increased. The existing frontcountry trails would be retained.
2. Mora and Rialto Beach facilities would be upgraded. Some facilities (e.g., destination learning center) might be located outside the park. A visitor center might be developed in the park.
3. Park would seek to partner with the Quileute Tribe to provide a boat service from Mora to La Push, where visitors may access tribal facilities and land.

Legend

Low Use Zone	NPS Boundary
Day Use Zone	Trail
Development Zone	Paved road
NPS Wilderness	Unpaved road
Intertidal Reserve Zone	Indian Reservation
	USFS

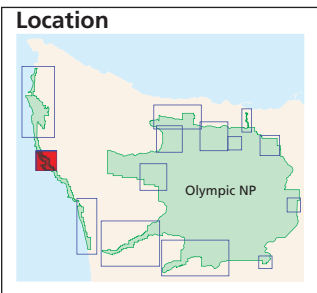


Mora Alternative D - Preferred Alternative



Legend

 Low Use Zone	 NPS Boundary
 Day Use Zone	 Trail
 Development Zone	 Paved road
 NPS Wilderness	 Unpaved road
 Intertidal Reserve Zone	 Indian Reservation
	 USFS



1. The last half-mile of road would be retained unless lost to a catastrophic event and reconstruction is infeasible due to topography. Access would then be provided by a frontcountry accessible trail from a parking area. The existing frontcountry trails would be retained.
2. Mora campground and ranger station would remain. Facilities at Rialto Beach would be retained unless lost to a catastrophic event and/or road access is lost. A foot trail, trailhead, and parking would then be established where road becomes a trail.
3. Park would seek to partner with the Quileute Tribe to provide a boat or canoe service from Mora to La Push, where visitors may access tribal facilities and land.